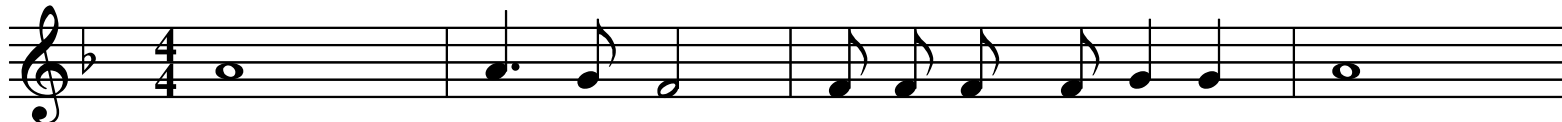


152 - AHNA LKOLL NIR-RINGRZJAW



Li - lek Mu-lej, ah-na lkoll nir-rin-graz - zjaw,
 Li - lek Mu-lej, ah-na lkoll nir-rin-graz - zjaw,
 Li - lek Mu-lej, ah-na lkoll nir-rin-graz - zjaw,



Li - lek, li - lek Mu - lej, Ej - ja nfah - hru u nkan-
 Li - lek, li - lek Mu - lej, Ej - ja nfah - hru u nkan-
 Li - lek, li - lek Mu - lej, Ej - ja nfah - hru u nkan-



Fine

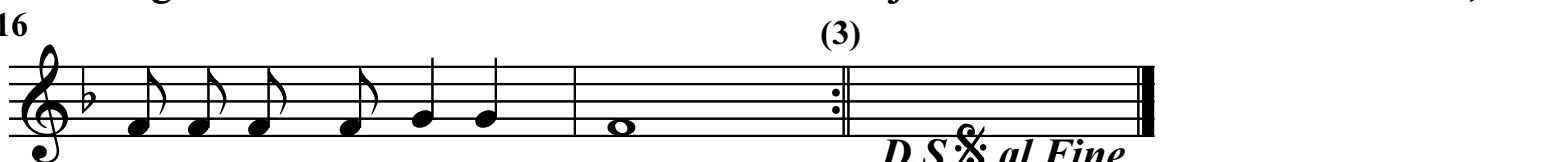
- taw. Gha - liex In - ti hlaqt id - din - ja u kull ma
 - taw. Gha - liex In - ti tie - hu hsie - bna u qed iz-
 - taw. Gha - liex In - ti bghatt lil Ib - nek biex jghaq-



fi - ha jin - sab, Ah-na lkoll nir-rin-graz - zjawk, U fuq
 - zom-mna haj - jin, Ah-na lkoll nir-rin-graz - zjawk, Int tmex-
 - qad - na flim-kien, Ah-na lkoll nir-rin-graz - zjawk, U Fih



kol - lox In - ti hlaq - tna biex naghr - fuk hawn fl'art,
 - xi - na u tha - ris - na biex in - ku - nu hen - jin,
 gbar - tna bhal u - lie - dek l'iz - jed mah - bu - bin,



D.S. al Fine

Ej-ja nfah-hru u nkan - taw.
 Ej-ja nfah-hru u nkan - taw.
 Ej-ja nfah-hru u nkan - taw.